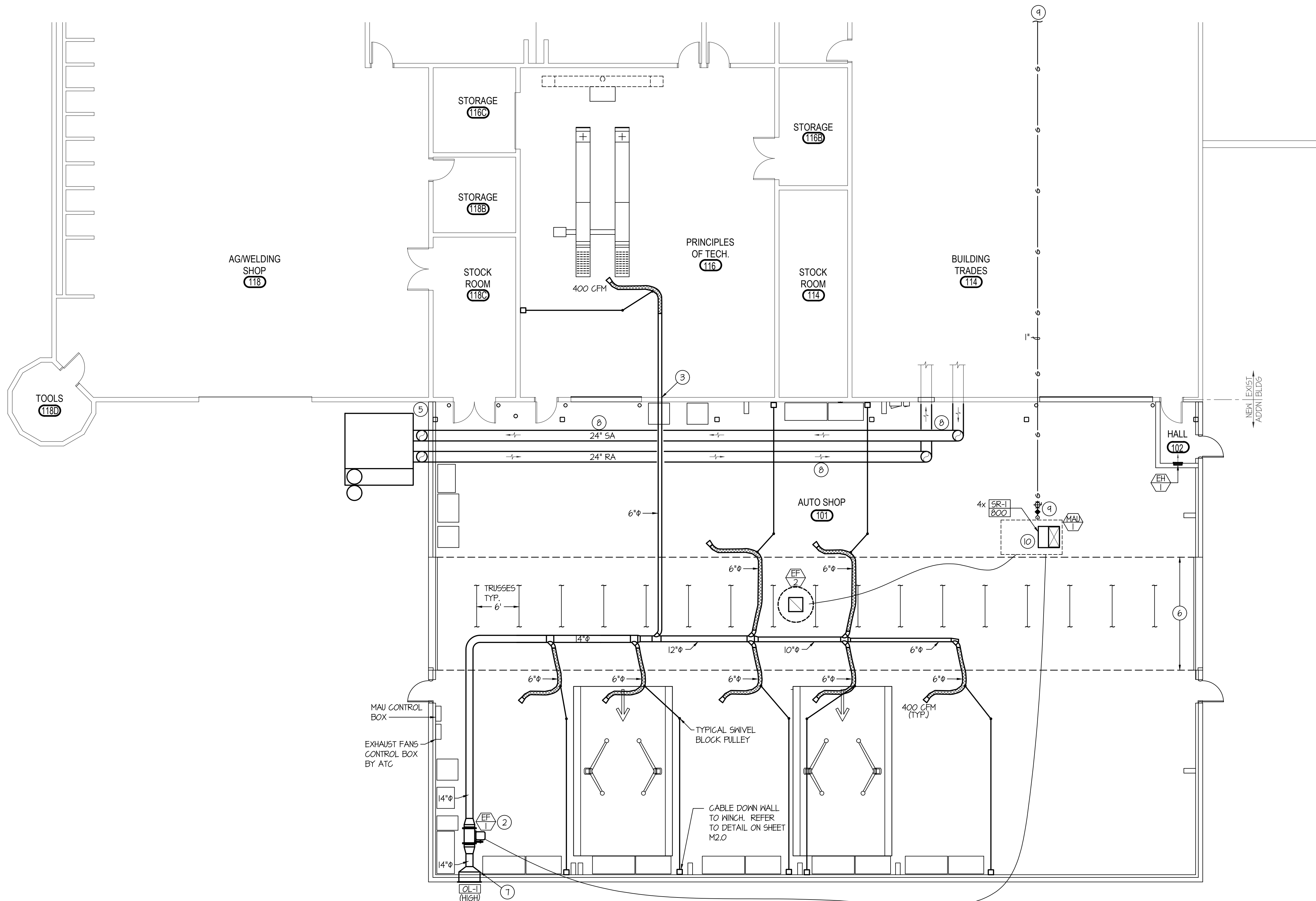


3/25/2019 4:06:47 PM F:\16\16082 SVHS Shop_Addn\MAIN.dwg



MAIN FLOOR MECHANICAL PLAN

SCALE: 1/8" = 1'-0"



PLAN NOTES:

- 1 DROP ROUND FLEXIBLE TUBE DOWN TO FLOOR FOR CAR EXHAUST SYSTEM. SUPPORT FLEXIBLE TUBES WITH SLING SYSTEM AND MOUNT TAKE-UP WINCH. SEE DETAIL ON SHEET M2.0. LENGTH OF DUCTS SHALL BE AS REQUIRED TO REACH THE FLOOR.
- 2 HANG EXHAUST FAN FROM ROOF STRUCTURE. KEEP CLEAR OF SUPPORT TRUSSES. COORDINATE FINAL LOCATION WITH LIGHTING PLAN TO AVOID CONFLICT. SEE DETAIL ON SHEET M2.0.
- 3 CORE DRILL BLOCK WALL FOR DUCT PENETRATION.
- 4 SEE EXHAUST INTAKE DETAIL ON SHEET M2.0 FOR DETAILS. COORDINATE WITH LIGHTING AND EQUIPMENT FOR FINAL LOCATION AND INSTALLATION. MAKE UP AIR UNIT TO BE INTERLOCKED WITH EF-1 OR EF-2 OPERATION. SEE SPEC'S FOR DETAILS.
- 5 NEW LOCATION TO BE AS CLOSE TO CORNER AS POSSIBLE. SEE SECTION VIEW ON SHEET M2.0 FOR DUCT ROUTE.
- 6 KEEP DUCTWORK ABOVE ROOF STRUCTURE CLEAR IN THIS AREA. NO DUCTWORK OR PIPING ALLOWED BELOW ROOF STRUCTURE IN THIS AREA.
- 7 TRANSITION FROM 14" TO 32" X 32" FOR OUTSIDE LOUVER.
- 8 EXTEND EXISTING 24" DUCTWORK AS SHOWN TO NEW LOCATION OF EXHAUST COLLECTOR. HOLD AS TIGHT AS POSSIBLE BELOW TRUSSES. SEE SECTION VIEW ON SHEET M2.0. FIELD VERIFY SIZE AND LOCATION.
- 9 RUN NEW 1" (2 PSI) GAS LINE TO MAKE UP AIR UNIT AND CONNECT. INSTALL 2 PSI TO OZ. REGULATOR SIZED FOR ACTUAL LOAD OF UNIT. INSTALL SHUT-OFF VALVE, DIRT LEG AND FLEXIBLE CONNECTION ON 3/4" OZ. GAS LINE. CONNECT TO EXISTING 2" OR LARGER GAS LINE. FIELD VERIFY SIZE & LOCATION.
- 10 DROP 18x34" DUCT FROM NEW MAKE UP AIR UNIT TO NEW PLENUM. SEE DETAILS ON SHEET M2.0

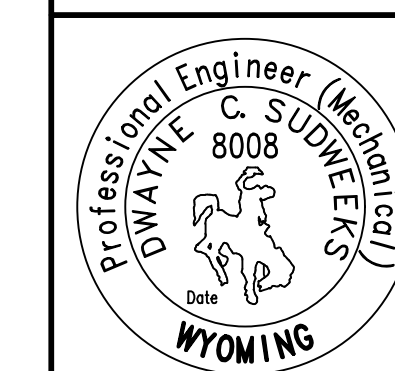
MECHANICAL LEGEND

SYMBOL	DESCRIPTION
Ⓢ	ELECTRONIC THERMOSTAT
Ⓢ	EQUIPMENT SYMBOL
HD	HAND DAMPER
Ⓢ	ROUND BRANCH DUCT WITH HAND DAMPER
Ⓢ	INSULATED FLEXIBLE DUCT
Ⓢ	RETURN AIR OR EXHAUST GRILLE
Ⓢ	CEILING DIFFUSER
Ⓢ	ROOF MOUNTED UPBLAST EXHAUST FAN

GENERAL NOTES:

- A- THE CONTRACTOR SHALL CHECK AND VERIFY ALL DIMENSIONS AND CONNECTIONS ON THE JOB SITE. ALL WORK SHALL BE EXECUTED FROM MEASUREMENTS TAKEN AT THE SITE.
- B- THE MECHANICAL CONTRACTOR SHALL BE RESPONSIBLE TO INSURE PROPER CODE CLEARANCES FOR ELECTRICAL AND MECHANICAL ACCESS WHEN INSTALLING ANY EQUIPMENT SUPPLIED BY THE MECHANICAL CONTRACTOR.
- C- IT IS CRITICAL THAT THIS CONTRACTOR COORDINATE EQUIPMENT LOCATIONS WITH PIPING, DUCTWORK, ELECTRICAL CONDUIT AND BUILDING STRUCTURE TO INSURE CODE COMPLIANCE.
- D- CEILING DIFFUSERS ARE SHOWN IN APPROXIMATE LOCATIONS. REFER TO LIGHTING PLANS AND REFLECTED CEILING PLAN FOR EXACT LOCATIONS.
- E- DUCT DIMENSIONS CALLED OUT ON DRAWINGS ARE INSIDE FREE AREA DIMENSIONS. ACOUSTICAL DUCT LINER ARE TO BE ADDED TO OVERALL MEASUREMENTS.
- F- ALL DUCTWORK AND PIPING WHICH PASSES THRU FIRE RATED WALLS TO BE FIRE STOPPED WITH APPROVED FOAM OR SEALANT. REFER TO SPECIFICATIONS FOR APPROVED MANUFACTURES.

ORIGINAL DRAWING SIGNED BY: DWAYNE C. SUDWEEKS
 DATE ORIGINAL SIGNED: Jan 25, 2019
 ORIGINAL ON FILE AT ENGINEERED SYSTEMS ASSOCIATES
 1355 EAST CENTER, POCATELLO, IDAHO 83201



Engineered Systems Associates
 1355 EAST CENTER
 POCATELLO, IDAHO 83201
 PHONE: (208) 233-0501
 FAX: (208) 233-0529
 EMAIL: esa@engsystems.com
 ESA JOB NUMBER: 16082

nbw architects p.a.
 ARCHITECTURE PLANNING INTERIORS
 SCOTT L. NELSON, A.I.A. KEVIN R. BODILY, A.I.A. JAMES H. WYATT, A.I.A.
 900 IDAHO PARKWAY, P.O. BOX 2212, IDAHO FALLS, IDAHO 83402-2212
 (208) 208-5727 (208) 778-8778 (208) 208-5727-8785 (208) nbw-architects.com

TECHNICAL CAREER CENTER FOR:
STAR VALLEY HIGH SCHOOL
 LINCOLN COUNTY SCHOOL DISTRICT NO. 2
 445 SWIFT CREEK LANE, AFTON, WYOMING 83110

PROJECT:
 SHEET TITLE:

REVISIONS

NO.	DESCRIPTION

PROJECT NO. 16061
 DATE: MARCH 2019
 DRAWN BY: T. DAVIS
 CHECKED BY: D. SUDWEEKS

DRAWING NO.:

M1.1